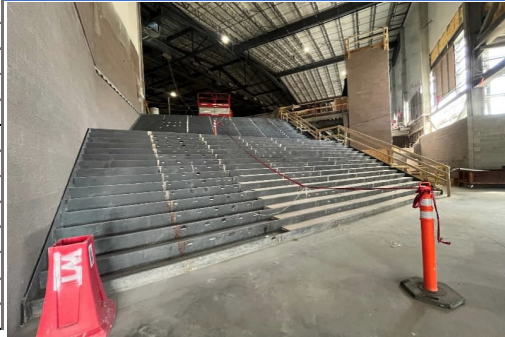


QUARTERLY STATUS

Overview:	Horizontal:
- HSSE: 1 recordable incident this quarter	- Design in-progress: Bettie Cram Drive bridge (DOTI), pedestrian bridge
- NWC Program schedule - SPI 1.00	
- NWC Program budget - CPI 1.00	- Construction in-progress: utilities, campuswide IT, Riverfront Open Space art
Program-Wide:	Vertical:
- Continued horizontal/vertical design, procurements	- Livestock Center: Arena, Expo Hall and Auction Hall exterior closure, mechanical and electrical systems and interior finishes; interface coordination with WSSA Legacy Bldg
- Continued regulatory planning and permitting	
- Continued Public Art process	
- Continued Livestock Center construction	
- Initiated Plaza construction	
- Coordination - Authority - Equest Center / Pkg Gar	
- Coordination - WSSA - Legacy Building	

Livestock Center - Interior Arena Stair Access



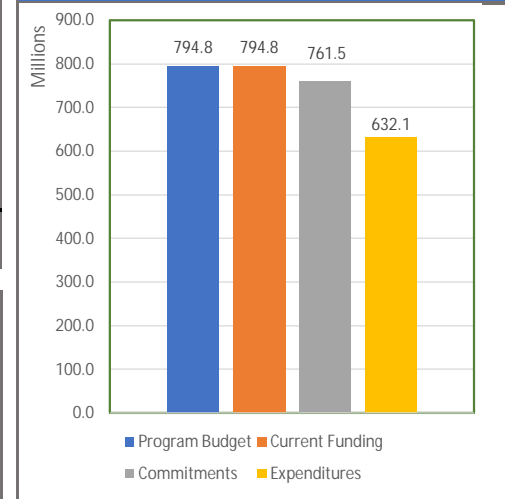
MAJOR CONTRACTS AND PROCUREMENT STATUS

	Vendor	Description	Contracted Date	Amount
Contracted	Wilson & Co	Brighton Blvd - Design	Dec 2016	\$ 1,050,044
	Moore Iacofano Goltsman (MIG)	Campus Placemaking	Jun 2017	\$ 5,000,000 *
	Saunders Construction LLC	Demolition and Abatement	Sep 2017	\$ 18,000,000 *
	Kiewit Infrastructure Co	Brighton Blvd - Construction	Dec 2017	\$ 12,604,322
	Merrick & Company	Horizontal Design	Apr 2018	\$ 25,000,000 *
	Wilson & Co	DRIR Rail Consolidation	Apr 2018	\$ 2,190,687
	Hensel Phelps Construction	Horizontal Integrated Construction (HIC)	Jun 2018	\$ 275,000,000 *
	Short, Elliot and Hendrickson (S.E.H.)	Maint. & Ops Facility - Design	Sep 2018	\$ 776,758
	HKS, Inc.	Stockyards Event Cntr / Stockyards - Design	Nov 2018	\$ 3,659,443
	G.H. Phipps	Maint. & Ops Facility - Precon	Dec 2018	\$ 15,000
	Adolfson & Peterson	Stockyard Event Cntr / Stockyards - Precon	Mar 2019	\$ 37,500
	Populous	Equestrian Center / Parking Garage - Design	May 2019	\$ 10,831,281
	G.H. Phipps	Maint. & Ops Facility - CM/GC	Dec 2019	\$ 5,335,422
	Adolfson & Peterson	Stockyard Event Cntr / Stockyards - CM/GC	Dec 2019	\$ 8,529,490
	Whiting - Turner	Equestrian Center / Parking Garage - Precon	Dec 2019	\$ 2,443,650
	Populous	Livestock Center - Design	Feb 2020	\$ 10,557,527
	Whiting - Turner	Livestock Center - Precon	Oct 2020	\$ 1,742,828
	Whiting - Turner	Livestock Center - CM/GC	Sep 2022	\$ 239,919,735
Future	TBD - by National Western Ctr Authority	Equestrian Center / Parking Garage	TBD	TBD

KEY PERFORMANCE INDICATORS

Description	Value
Health, Safety, Security, and Environment	Yellow
Cost	Yellow
Schedule	Green
Design	Green
Community	Green
LEED	Green
Concurrent Operations	Green

FINANCIAL SUMMARY



BUDGET, COMMITMENTS AND COST

PROGRESS/PERFORMANCE

Portfolio	Program To Date			Percent Complete	SPI
	Budget	Commitment	Cost		
Planning and Design Studies	4,793,446	4,793,445	4,793,445	100.0%	1.00
Horizontal	396,001,036	378,011,635	376,618,539	95.2%	1.00
Vertical	339,923,087	330,625,548	204,037,894	61.0%	1.00
Program Wide	54,126,313	48,112,791	46,675,633	86.8%	1.00
Total Program	794,843,882	761,543,418	632,125,512	80.0%	1.00

Commitment = Contracted obligations and expenditures

KEY SCHEDULE MILESTONES

Activity/ Milestone	Completion Date
Program Substantial Completion	TBD
DRIR Rail Consolidation Complete	02/23/21 A
Delgany Interceptor Construction Complete	04/30/21 A
SYEC, Bison Pens and Plaza Substantial Completion	12/15/21 A
Stockyards Substantial Completion	12/31/21 A
Equestrian Center Substantial Completion (NWCA)	TBD
Livestock Center Substantial Completion	11/28/25
Pedestrian Bridge Substantial Completion	TBD
51st Ave Bridge Substantial Completion	09/02/22 A
Bettie Cram Drive Bridge Substantial Completion	TBD
CSU Animal Health Building Pad Ready	03/09/20 A
CSU Water Resources Center Pad Ready	09/14/20 A
CSU Center Pad Ready	09/14/20 A
WSSA Legacy Building Pad Ready / Land Closing	01/10/24 A

Livestock Center Construction - Looking West - June 2024



Gray shading = Complete A = Actual Date